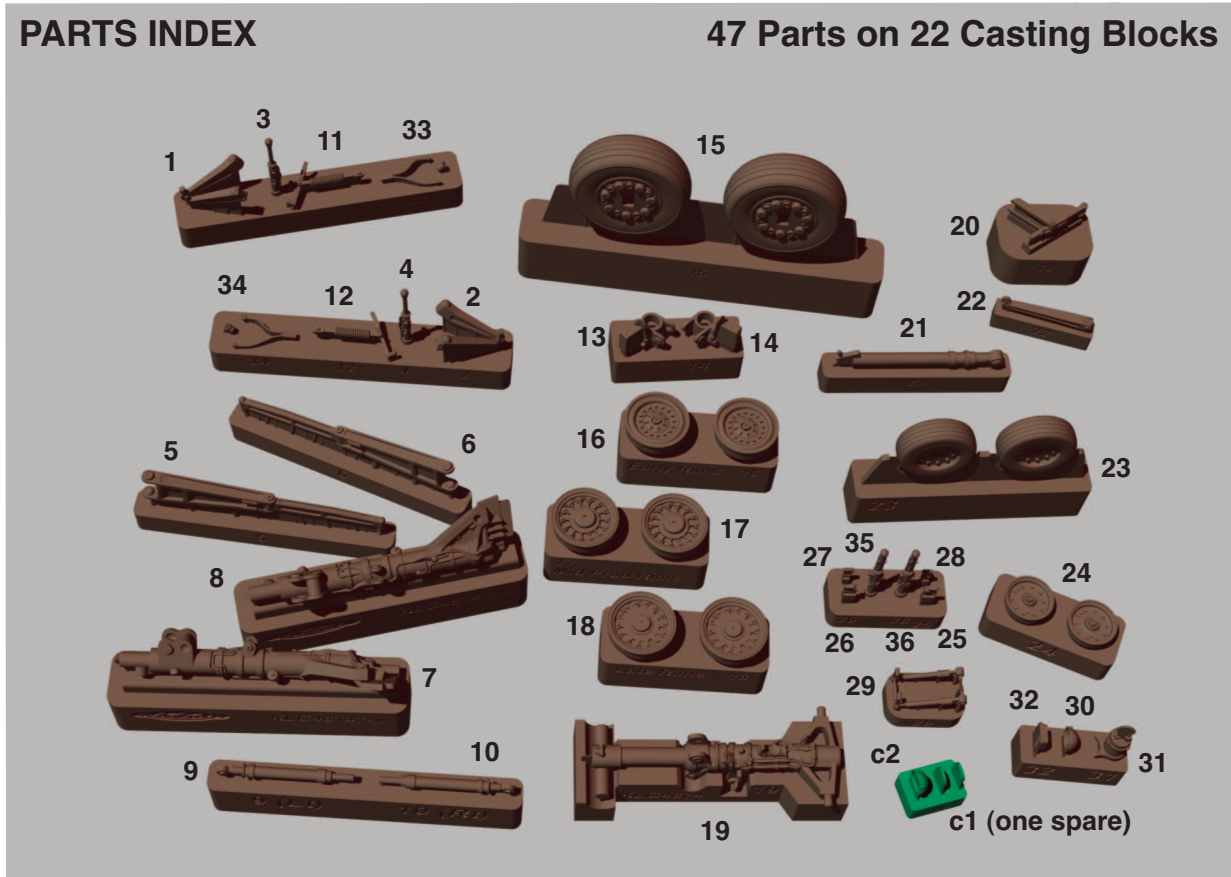


PARTS INDEX

47 Parts on 22 Casting Blocks



NOTES:

Familiarize yourself with these instructions well.

Use a new knife blade to remove the components from their blocks. This is very important with all the components, but is particularly important with respect to Part 29, which is a printed, and not cast, part. Part 29 could not be cast correctly, and so it was decided to go with a printed item, and although this yielded the desired characteristics, the part is more brittle than the resin of the remaining poured items.

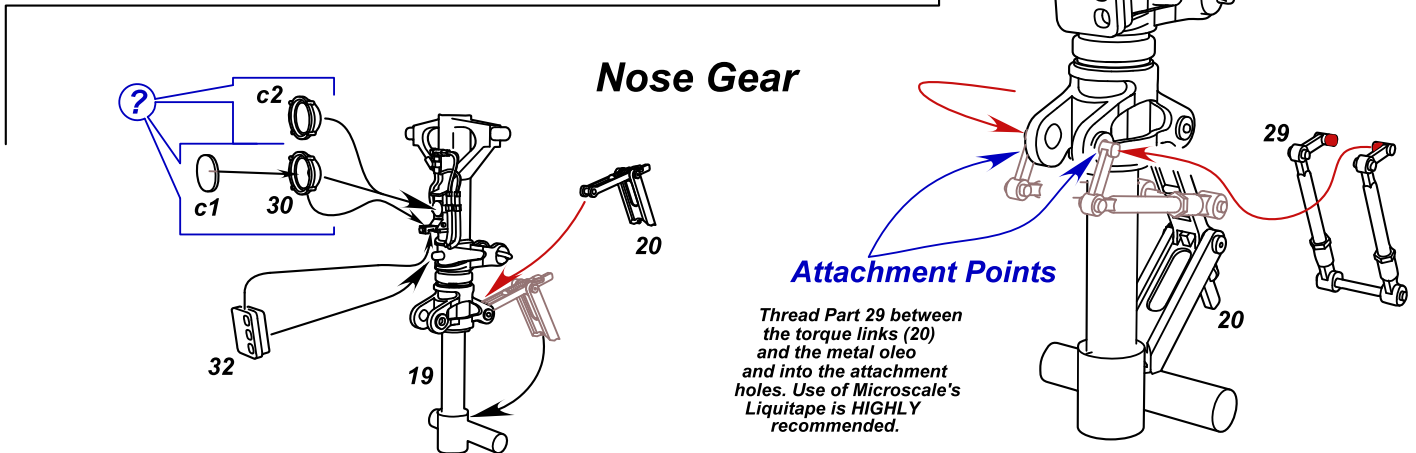
Removal of the parts in general, and Part 29 in particular, should be done using several light slicing motions, rather than a forced cut through the part connections.

The 'snap into place' feature in the design of these sets is to allow the part to hold in position while it is glued in place. It allows for much easier gluing with CA and results in a much cleaner assembly.

There is no need to mask the exposed oleo and retraction pistons because the primer/paint/clear coats can be quite easily scraped off with a knife blade.

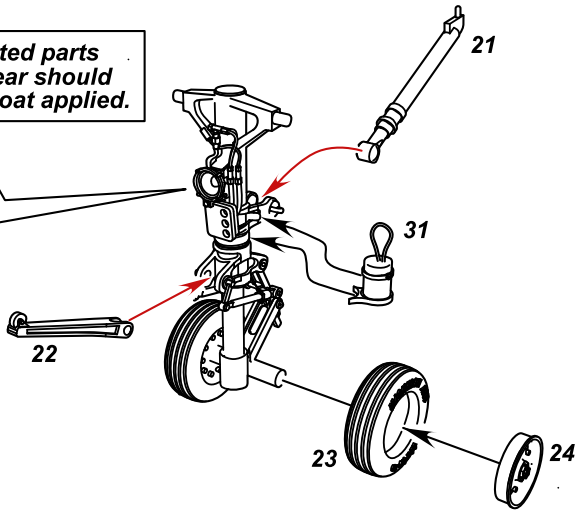
- ← **Glue in place (note locator helpers)**
- ← **Gently snap into place (Glue as required)**

Enjoy your kit!

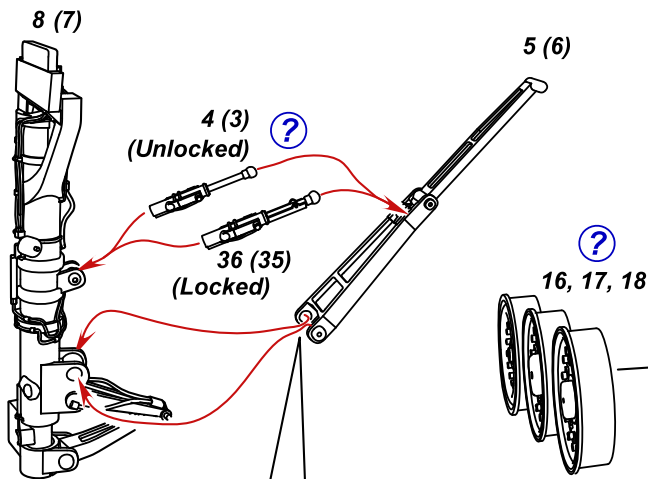
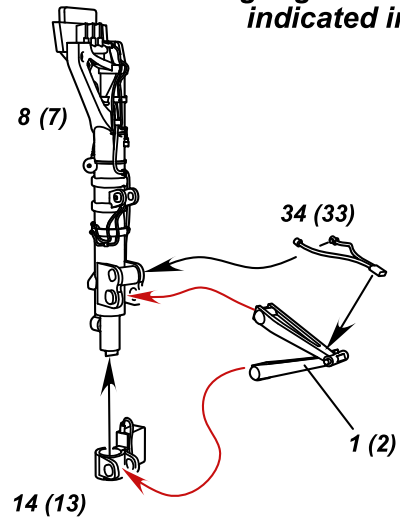


Nose Gear (con't)

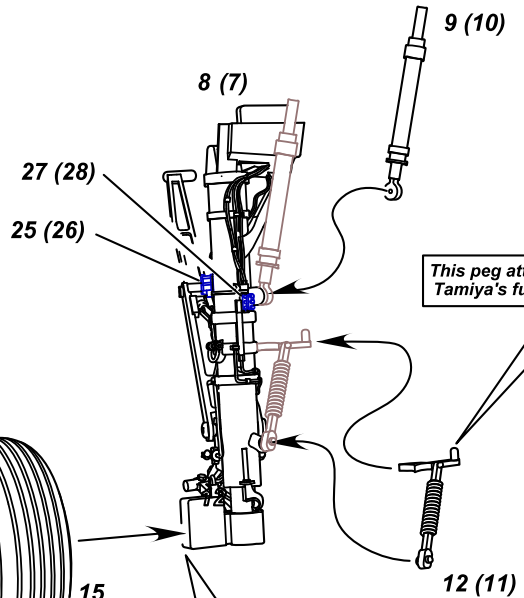
The clear printed parts of the nose gear should have a clear coat applied.



Left Main Gear Shown Right gear components indicated in brackets

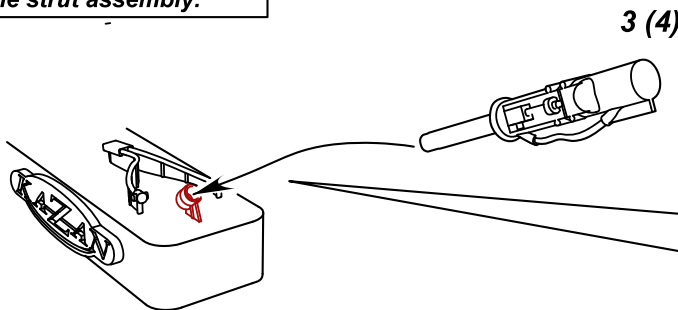


If required, run some fine sandpaper across the inner bulbs to ease sliding 5 and 6 onto the strut assembly.



This peg attaches to Tamiya's fuselage.

Please Note: There is an 'up' and a 'down' in the way the main wheels attach to the struts. They need to be consistent left and right, or your model will have a lean to it.



If required, a replacement bulb for retraction struts 3,4, 35 and 36 are located on the casting blocks that contain Parts 3 and 4. The piston end can be inserted into the bulb and the assembly can be broken off the block and cleaned up with a fine sandpaper rubbing.

A more detailed look at the construction of this kit can be found at www.kazanmodeldynamics.com.